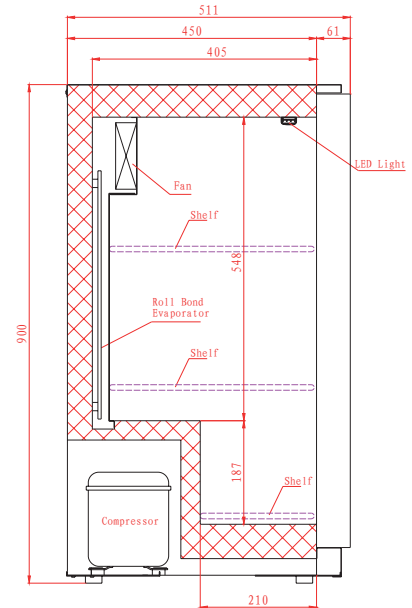


# Bar Bottle Coolers

Standard Black, Sliding Doors

BAR2SL



BAR3SL



## FEATURES

Black laminated exterior; Aluminium stippled interior

Self closing, double glazed door(s)

Heavy duty adjustable shelves

2 shelves per door

Lock fitted as standard

Internal LED illumination

## TECHNICAL SPECIFICATIONS

Controller:	Digital controller with temperature display
Cooling:	Fan assisted
Defrost:	Automatic
Refrigerant:	R600a
Climate Class:	4
Temperature Range:	+4°C ~ +12°C
Power Supply:	13amp

MODEL	DOOR	CAPACITY (Bottles*)	GROSS CAPACITY	EXT. DIMENSIONS (H x W x D mm)	POWER CONSUMPTION	DECIBELS	WEIGHT (kg)	RRP
BAR2SL	2	182	200L	900 x 903 x 511	185W	54dBA	59	
BAR3SL	3	293	310L	900 x 1353 x 511	320W	59dBA	91	

\* based on 275ml bottles



See page 302 for accessories

